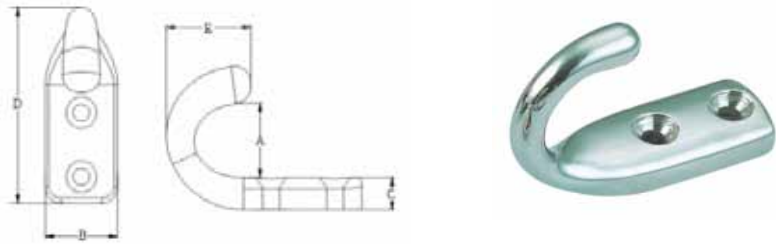
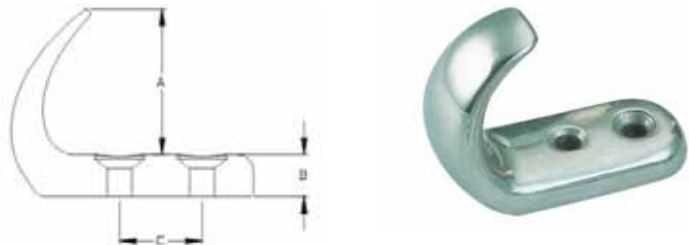


## DECK HOOK (TYPE-EL), SS304 OR SS316



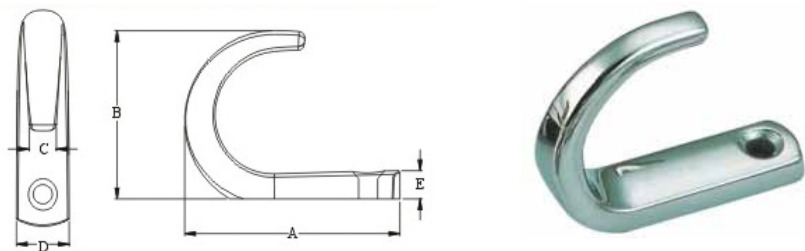
Part No. 304	Part No. 316	A mm	B mm	C mm	D mm	E mm
40374	<b>40375</b>	16.50	13.00	5.90	40.00	17.00

## DECK HOOK (TYPE-33), SS304 OR SS316



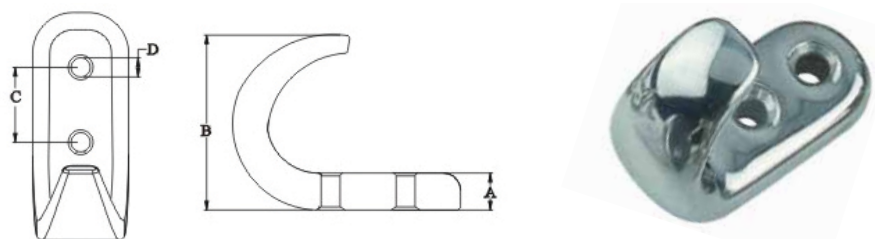
Part No. 304	Part No. 316	A mm	B mm	C mm
40376	<b>40377</b>	17.60	5.00	10.00

## DECK HOOK (TYPE-40), SS304 OR SS316



Part No. 304	Part No. 316	A mm	B mm	C mm	D mm	E mm
40378	<b>40379</b>	38.20	30.80	4.70	10.00	5.20

## DECK HOOK (TYPE-43), SS304 OR SS316



Part No. 304	Part No. 316	A mm	B mm	C mm	D mm
40380	<b>40381</b>	6.20	31.00	10.20	3.60

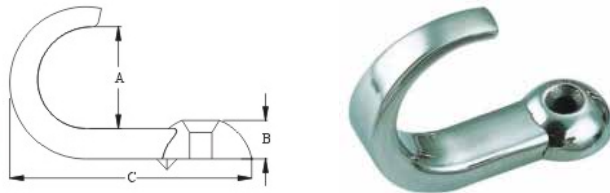


**DECK HOOK (TYPE-45), SS304 OR SS316**



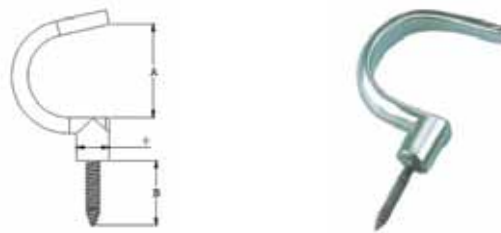
Part No. 304	Part No. 316	φ mm	A mm	B mm
40382	<b>40383</b>	7.40	40.80	21.00

**DECK HOOK (TYPE-46), SS304 OR SS316**



Part No. 304	Part No. 316	A mm	B mm	C mm
40384	<b>40385</b>	22.00	5.90	40.00

**DECK HOOK (TYPE-47), SS304 OR SS316**



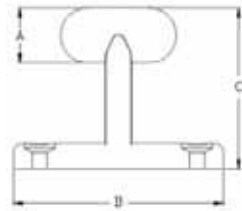
Part No. 304	Part No. 316	φ mm	A mm	B mm
40386	<b>40387</b>	8.60	25.90	21.00

**DECK HOOK (TYPE-60), SS304 OR SS316**



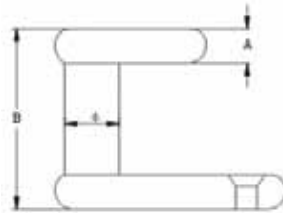
Part No. 304	Part No. 316	φ mm	A mm	B mm
40388	<b>40389</b>	9.80	60.00	55.00

## DECK HOOK (TYPE-G), SS304 OR SS316



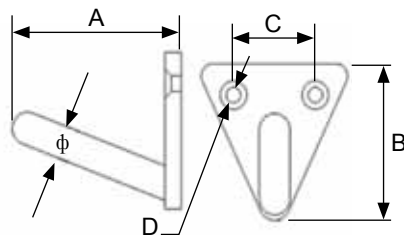
Part No. 304	Part No. 316	A mm	B mm	C mm
40396	<b>40397</b>	12.00	47.00	35.60

## DECK HOOK (TYPE-H), SS304 OR SS316



Part No. 304	Part No. 316	$\phi$ mm	A mm	B mm
40398	<b>40399</b>	9.00	6.70	30.00

## DECK HOOK (TYPE-63), SS304 OR SS316



Part No. 304	Part No. 316	$\phi$ mm	A mm	B mm	C mm	D mm
40400	<b>40401</b>	8.00	43.30	37.30	22.00	4.00