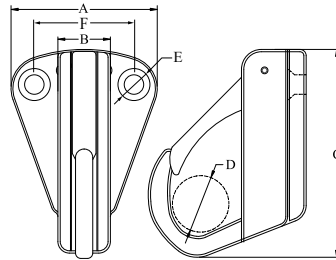


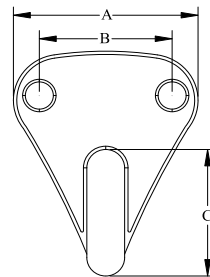


SPRING FENDER HOOK, SS304 OR SS316



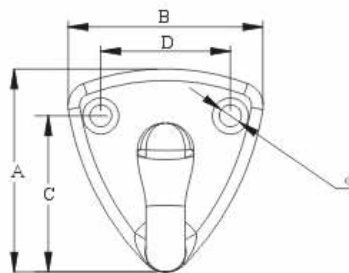
Part No. 304	Part No. 316	A mm	B mm	C mm	D mm	E mm	F mm
39876	39878	32.80	11.20	36.00	6.60	4.00	22.00
39877	39879	30.40	10.60	44.00	11.00	4.00	22.00

FENDER EYE, SS304 OR SS316



Part No. 304	Part No. 316	A mm	B mm	C mm
39874	39875	27.00	17.00	18.00

FENDER HOOK, SS304 OR SS316



Part No. 304	Part No. 316	ϕ mm	A mm	B mm	C mm	D mm
39880	39881	2.80	25.80	24.40	20.00	16.60