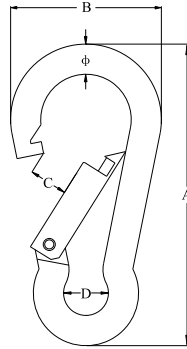


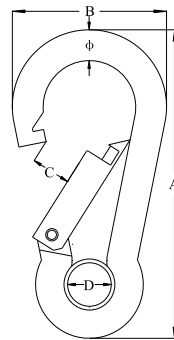
MARINE AND ARCHITECTURAL HARDWARE

SPRING HOOK, SS304 OR SS316



Part No. 304	Part No. 316	φ mm	A mm	B mm	C mm	D mm	SWL kgs	BL kgs
38700	38710	4.50	42.00	20.50	6.00	6.50	45	180
38701	38147	5.00	50.00	26.50	7.00	8.00	55	220
38702	38711	6.00	60.00	30.00	7.50	8.50	68	272
38703	38148	7.00	70.00	35.00	9.00	9.50	91	364
38704	38712	8.00	80.00	40.50	10.00	12.00	127	508
38705	38713	9.00	90.00	45.00	10.50	12.80	150	600
38706	38149	10.00	100.00	50.00	12.00	15.00	182	728
38707	38714	11.00	120.00	58.00	16.00	19.00	204	816
38708	38715	12.00	140.00	64.00	21.00	22.00	227	908
38709	38716	13.00	160.00	72.00	24.00	22.00	250	1000

SPRING HOOK WITH EYE, SS304 OR SS316



Part No. 304	Part No. 316	φ mm	A mm	B mm	C mm	D mm	SWL kgs	BL kgs
-	44507	4.50	40.00	20.00	6.00	5.50	40	160
38717	19182	5.00	50.00	26.50	7.00	7.80	55	220
38718	19183	6.00	60.00	30.00	7.50	7.80	68	272
38719	19184	7.00	70.00	35.00	9.00	8.70	91	364
38720	19185	8.00	80.00	40.50	10.00	10.80	127	508
38721	38726	9.00	90.00	45.00	10.50	12.00	150	600
38722	19186	10.00	100.00	50.00	12.00	14.00	182	728
38723	30103	11.00	120.00	58.00	16.00	18.00	204	816
38724	38727	12.00	140.00	64.00	21.00	20.00	227	908
38725	38728	13.00	160.00	72.00	24.00	20.00	250	1000

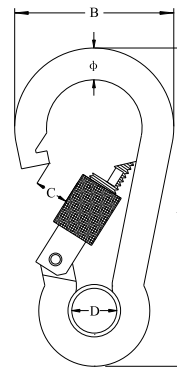


SPRING HOOK WITH LOCKING NUT, SS304 OR SS316



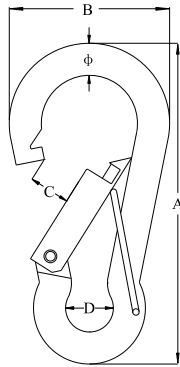
Part No. 304	Part No. 316	φ mm	A mm	B mm	C mm	D mm	SWL kgs	BL kgs
38729	38736	6.00	60.00	30.00	6.50	8.50	114	456
38730	38737	7.00	70.00	35.00	7.50	9.50	145	580
38731	38738	8.00	80.00	40.50	8.50	12.00	182	728
38732	38739	9.00	90.00	45.00	9.00	12.80	225	900
38733	38740	10.00	100.00	50.00	10.00	15.00	273	1092
38734	38741	11.00	120.00	58.00	14.50	19.00	315	1260
38735	38742	12.00	140.00	64.00	19.00	22.00	365	1460

SPRING HOOK WITH LOCKING NUT AND EYE, SS304 OR SS316



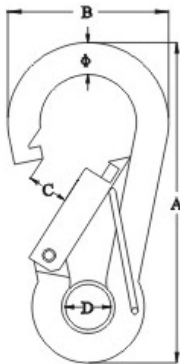
Part No. 304	Part No. 316	φ mm	A mm	B mm	C mm	D mm	SWL kgs	BL kgs
38743	38750	6.00	60.00	30.00	6.50	7.80	114	456
38744	38751	7.00	70.00	35.00	7.50	8.70	145	580
38745	38752	8.00	80.00	40.50	8.50	10.80	182	728
38746	38753	9.00	90.00	45.00	9.00	12.00	225	900
38747	38754	10.00	100.00	50.00	10.00	14.00	273	1092
38748	38755	11.00	120.00	58.00	14.50	18.00	315	1260
38749	38756	12.00	140.00	64.00	19.00	20.00	365	1460

LOCK SPRING HOOK, SAFETY LATCH, SS304 OR SS316



Part No. 304	Part No. 316	ϕ mm	A mm	B mm	C mm	D mm	SWL kgs	BL kgs
38757	38766	5.00	50.00	26.50	7.00	8.00	55	220
38758	38767	6.00	60.00	30.00	7.50	8.50	68	272
38759	38768	7.00	70.00	35.00	9.00	9.50	91	364
38760	38769	8.00	80.00	40.50	10.00	12.00	127	508
38761	38770	9.00	90.00	45.00	10.50	12.80	150	600
38762	38771	10.00	100.00	50.00	12.00	15.00	182	728
38763	38772	11.00	120.00	58.00	16.00	19.00	204	816
38764	38773	12.00	140.00	64.00	21.00	22.00	227	908
38765	38774	13.00	160.00	72.00	24.00	22.00	250	1000

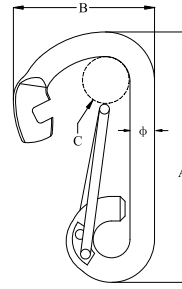
LOCK SPRING HOOK WITH EYE, SAFETY LATCH, SS304 OR SS316



Part No. 304	Part No. 316	ϕ mm	A mm	B mm	C mm	D mm	SWL kgs	BL kgs
38775	38784	5.00	50.00	26.50	7.00	7.80	55	220
38776	38785	6.00	60.00	30.00	7.50	7.80	68	272
38777	38786	7.00	70.00	35.00	9.00	8.70	91	364
38778	38787	8.00	80.00	40.50	10.00	10.80	127	508
38779	38788	9.00	90.00	45.00	10.50	12.00	150	600
38780	38789	10.00	100.00	50.00	12.00	14.00	182	728
38781	38790	11.00	120.00	58.00	16.00	18.00	204	816
38782	38791	12.00	140.00	64.50	21.00	20.00	227	908
38783	38792	13.00	160.00	72.00	24.00	20.00	250	1000

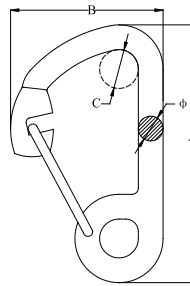


SPRING HOOK, SS304 OR SS316



Part No. 304	Part No. 316	φ mm	A mm	B mm	C mm	SWL kgs	BL kgs
38887	38891	6.00	60.00	34.50	12.50	188	750
38888	38892	8.00	80.00	46.00	17.00	438	1750
38889	38893	10.00	100.00	55.00	23.50	563	2250
38890	38894	12.00	122.50	72.00	28.00	913	3650

SPRING HOOK CAST, SS304 OR SS316



Part No. 304	Part No. 316	φ mm	A mm	B mm	C mm
38895	38897	6.00	60.00	34.50	12.50
30004	38898	8.00	80.00	46.00	17.00
33487	38899	14.00	143.00	85.50	20.00
38896	38900	16.00	165.00	98.00	25.00

SPRING HOOK, SS304 OR SS316



Part No. 304	Part No. 316	φ mm	A mm	B mm	C mm	SWL kgs	BL kgs
38911	38915	6.00	60.00	30.00	8.00	68	272
38912	38916	8.00	80.00	40.00	11.50	127	508
38913	38917	10.00	100.00	50.00	13.50	182	728
38914	38918	11.00	120.00	60.00	16.00	204	816