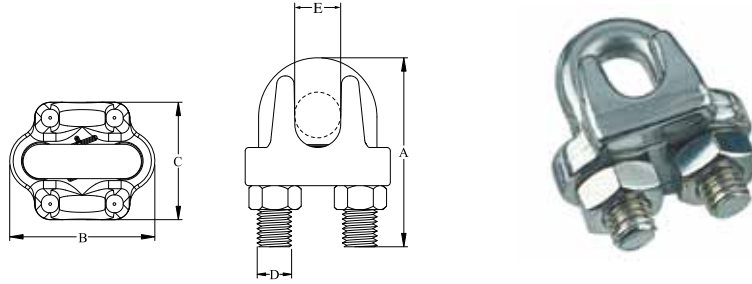
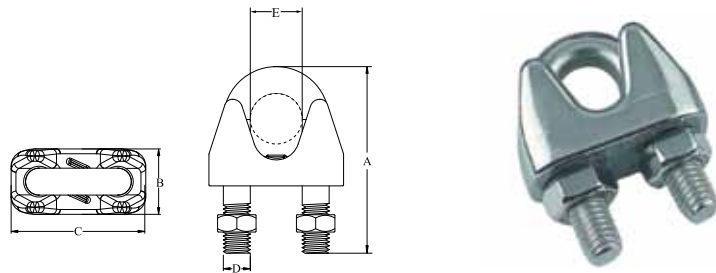


WIRE ROPE CLIP, SS304 OR SS316



Part No. 304	Part No. 316	A mm	B mm	C mm	D mm	E mm
42271	19455	18.00	15.30	13.00	M3	2.0
42273	19456	24.50	15.80	14.50	M4	3.0
42274	19457	24.00	18.50	18.00	M4	4.0
42275	19458	29.00	23.00	19.60	M5	5.0
42276	19459	31.00	26.30	20.50	M6	6.0
42277	19460	41.00	33.50	27.00	M8	8.0
42265	19461	52.00	42.70	33.80	M10	10.0
42278	19462	61.00	50.00	37.80	M12	12.0
39986	39999	67.50	50.60	42.00	M12	14.0
39987	40000	76.00	60.00	47.00	M14	16.0
39988	40001	79.00	61.50	51.00	M14	19.0
39989	40002	103.00	72.80	61.00	M16	22.0
39990	40003	110.00	72.50	60.00	M16	25.0

WIRE ROPE CLIP (LIGHT TYPE), SS304 OR SS316



Part No. 304	Part No. 316	A mm	B mm	C mm	D mm	E mm
40004	40015	21.30	10.00	17.00	M3	2.0
40005	40016	21.20	10.00	17.70	M3	3.0
40006	40017	24.00	11.00	21.30	M4	4.0
40007	40018	28.50	12.70	24.60	M6	5.0
40008	40019	31.80	15.80	27.50	M6	6.0
40009	40020	37.00	17.50	30.50	M6	8.0
40010	40021	45.80	19.50	37.00	M8	10.0
40011	40022	56.40	24.00	45.80	M10	13.0
40012	40023	66.80	25.00	49.80	M12	16.0
40013	40024	77.50	29.50	53.80	M12	19.0
40014	40025	86.50	31.30	63.00	M12	22.0