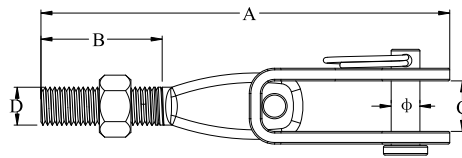


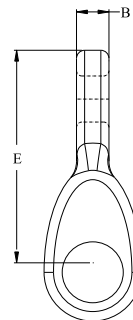
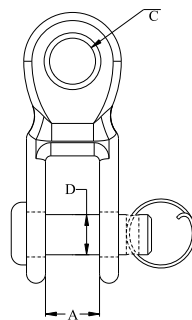


**TOGGLE TERMINAL WITH NUT, SS304 OR SS316**



Part No. 304	Part No. 316	φ mm	A mm	B mm	C mm	D mm
41473	<b>41475</b>	9.70	113.00	25.00	17.00	M12
41474	<b>41476</b>	9.70	126.00	40.00	16.90	M12

**SWAGE TOGGLE, SS304 OR SS316**



Part No. 304	Part No. 316	A mm	B mm	C mm	D mm	E mm	SWL kgs	BL kgs
41210	<b>41217</b>	5.60	3.80	5.50	4.90	35.00	250	1000
41211	<b>41218</b>	7.50	5.00	6.60	5.90	41.00	312	1250
41212	<b>41219</b>	9.90	6.00	9.00	7.90	49.70	425	1700
41213	<b>41220</b>	12.00	6.70	10.00	8.90	54.90	775	3100
41214	<b>41221</b>	13.00	9.00	13.10	11.90	77.70	1162	4650
41215	41222	14.70	10.00	15.00	14.00	91.30	1437	5700
41216	41223	16.60	12.20	16.60	15.70	115.90	2037	8100