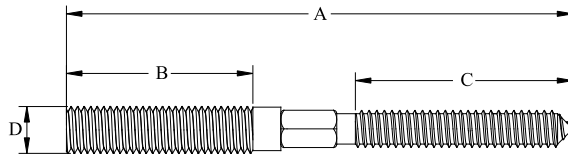
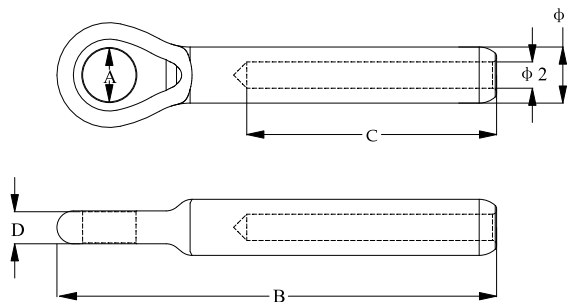


## DOUBLE THREAD LAG SCREW, SS304 OR SS316



Part No. 304	Part No. 316	A mm	B mm	C mm	D mm
40651	40659	50.00	11.00	36.00	M8
40652	40660	60.00	20.00	37.00	M8
40653	40661	81.00	30.00	35.00	M8
40654	<b>40662</b>	98.80	40.00	47.00	M8
40655	40663	50.00	15.00	37.00	M10
40656	40664	60.00	20.00	37.00	M10
40657	40665	84.50	20.00	47.00	M10
40658	<b>40666</b>	102.00	30.00	55.00	M10

## EYE TERMINAL FORGED, SS304 OR SS316



Part No. 304	Part No. 316	$\phi$ 1 mm	$\phi$ 2 mm	A mm	B mm	C mm	D mm	SWL kgs	BL kgs
40635	<b>40645</b>	5.50	2.70	5.50	57.50	35.00	2.60	213	850
40636	<b>37666</b>	6.30	3.30	6.50	62.30	38.70	3.80	250	1000
40637	<b>37667</b>	7.50	4.30	8.50	77.00	45.00	4.90	338	1350
40638	<b>37668</b>	9.00	5.30	10.60	89.00	53.80	5.80	625	2500
40639	<b>37669</b>	12.50	6.30	13.00	106.70	63.00	7.80	1125	4500
40641	<b>40647</b>	16.00	8.30	14.70	135.00	81.80	9.90	1675	6700
40642	<b>40648</b>	17.80	10.50	16.20	158.00	90.00	10.80	1950	7800
40643	<b>40649</b>	21.40	12.50	19.50	180.00	102.70	15.00	2250	9000
40644	40650	25.00	14.80	23.50	233.00	140.00	19.40	3000	12000