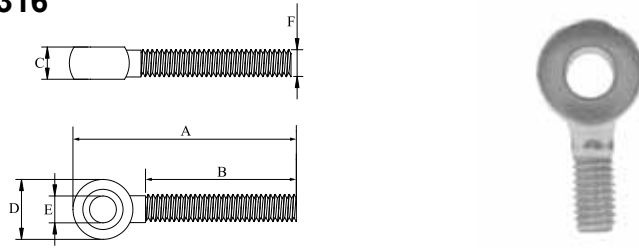


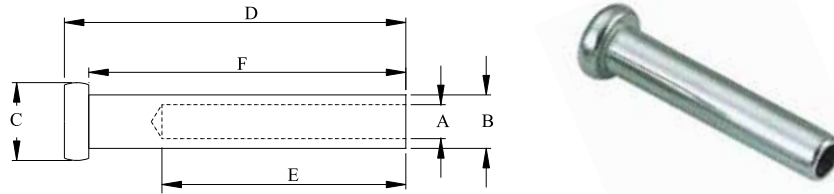


EYE BOLT/ SCREW, SS304 OR SS316



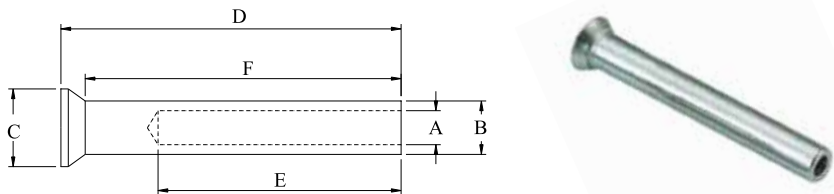
Part No. 304	Part No. 316	A mm	B mm	C mm	D mm	E mm	F mm
-	43413	28.00	10.00	7.00	14.00	6.20	M6
-	44496	26.00	10.00	6.70	12.70	5.90	M6
-	44497	43.00	26.00	6.70	12.70	6.00	M6

ROD TERMINAL (DOME), SS304 OR SS316



Part No. 304	Part No. 316	A mm	B mm	C mm	D mm	E mm	F mm
-	45160	3.30	6.30	10.00	35.00	25.00	32.00
40719	38000	3.30	5.50	8.00	35.00	25.00	32.00
40714	40721	4.30	6.30	10.00	35.00	25.00	32.00
40715	40722	5.30	7.50	11.50	41.00	30.00	38.00
40716	40723	6.30	9.08	14.00	52.00	40.00	48.50
40717	40724	8.40	12.50	18.00	66.00	50.00	62.00
40718	40725	10.50	16.08	22.00	77.00	60.00	73.00

COUNTER-SUNK ROD TERMINAL, SS304 OR SS316



Part No. 304	Part No. 316	A mm	B mm	C mm	D mm	E mm	F mm
40726	40732	3.30	5.50	8.00	35.00	25.00	32.50
40727	40733	4.30	6.30	10.00	35.00	25.00	32.00
40728	40734	5.30	7.50	11.50	41.00	30.00	38.00
40729	40735	6.30	9.08	14.00	52.00	40.00	48.50
40730	40736	8.40	12.50	18.00	66.00	50.00	62.00
40731	40737	10.50	16.08	22.00	77.00	60.00	73.00