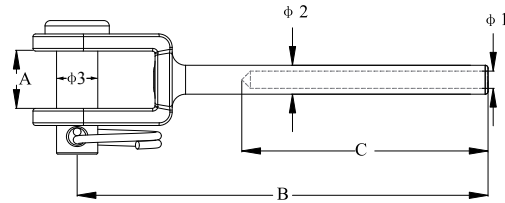
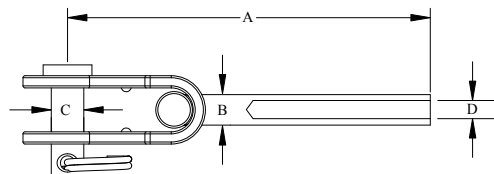


## FORK TERMINAL FORGED, SS304 OR SS316



Part No. 304	Part No. 316	φ 1 mm	φ 2 mm	φ 3 mm	A mm	B mm	C mm	SWL kgs	BL kgs	ROPE mm
40667	<b>40674</b>	2.70	5.45	5.00	6.50	55.00	24.00	175	700	2.5
40668	<b>37670</b>	3.50	6.35	6.00	8.20	65.00	32.00	313	1250	3.2
-	<b>44447</b>	3.40	6.24	5.00	7.50	50.00	25.00	300	1200	3.2
-	<b>42549</b>	3.50	6.35	5.00	7.00	65.00	32.00	313	1250	3.2
40669	<b>37671</b>	4.30	7.50	8.00	9.20	73.00	45.00	450	1800	4.0
-	<b>44555</b>	4.40	7.50	6.00	8.20	73.00	45.00	450	1800	4.0
40670	<b>37672</b>	5.30	9.00	10.00	12.00	88.00	57.00	663	2650	5.0
40671	<b>37673</b>	6.40	12.50	12.00	14.00	106.00	63.00	1000	4000	6.0
40672	<b>40675</b>	8.80	16.00	13.00	17.50	155.00	95.00	1450	5800	8.0
40673	<b>40676</b>	10.80	18.00	16.00	21.00	177.00	110.00	1800	7200	10.0

## TOGGLE TERMINAL, SS304 OR SS316



Part No. 304	Part No. 316	A mm	B mm	C mm	D mm	SWL kgs	BL kgs	ROPE mm
40694	<b>40701</b>	68.00	5.50	4.90	2.70	100	400	2.50
40695	<b>40702</b>	79.00	6.30	5.90	3.30	167	670	3.20
40696	<b>40703</b>	91.30	7.50	7.90	4.30	350	1400	4.00
40697	<b>40704</b>	107.80	9.00	9.80	5.30	425	1700	5.00
40698	<b>40705</b>	128.00	12.50	11.80	6.30	1000	4000	6.00
40699	<b>40706</b>	180.00	16.00	15.50	8.30	1750	7000	8.00
40693	<b>40700</b>	205.00	17.80	19.40	10.50	1875	7500	10.00