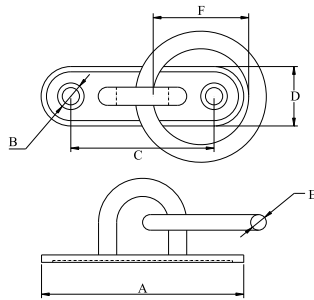
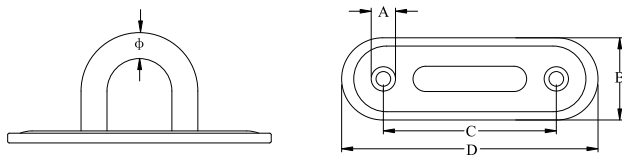


OBLONG PAD EYE (WITH RING), SS304 OR SS316



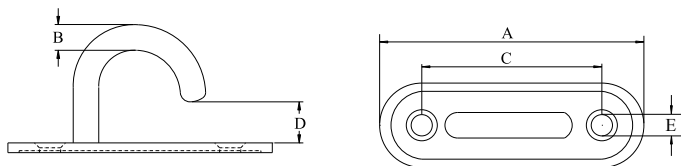
Part No. 304	Part No. 316	A mm	B mm	C mm	D mm	E mm	F mm
40244	40247	54.00	5.00	38.00	16.00	5.00	30.50
40245	40248	65.00	5.20	46.00	19.00	6.00	41.30
40246	40249	81.00	6.30	55.00	25.70	8.00	51.00

OBLONG PAD EYE, SS304 OR SS316



Part No. 304	Part No. 316	φ mm	A mm	B mm	C mm	D mm	SWL kgs	BL kgs
40250	40255	5.00	5.00	16.00	38.00	54.00	175	700
40251	40256	6.00	5.50	19.00	46.00	65.00	250	1000
40252	40257	8.00	6.50	25.80	55.50	81.00	400	1600
40253	40258	9.00	8.20	31.80	62.00	100.00	425	1700

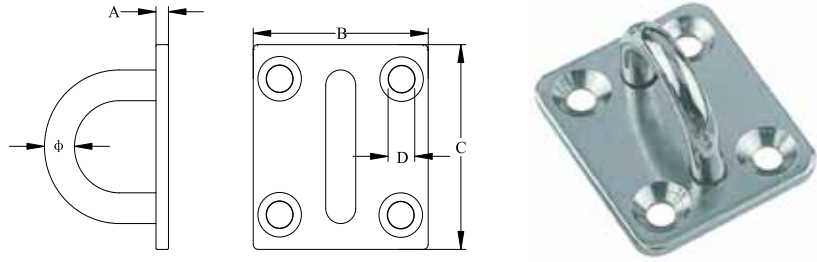
OBLONG PAD EYE (OPEN), SS304 OR SS316



Part No. 304	Part No. 316	A mm	B mm	C mm	D mm	E mm	SWL kgs	BL kgs
40260	40264	54.00	5.00	38.00	8.00	5.0	50	200
40261	40265	65.00	6.00	46.00	12.00	5.5	55	220
40262	40266	81.00	8.00	55.00	13.00	6.5	62	250
40263	40267	100.00	9.00	62.00	16.00	8.0	70	280

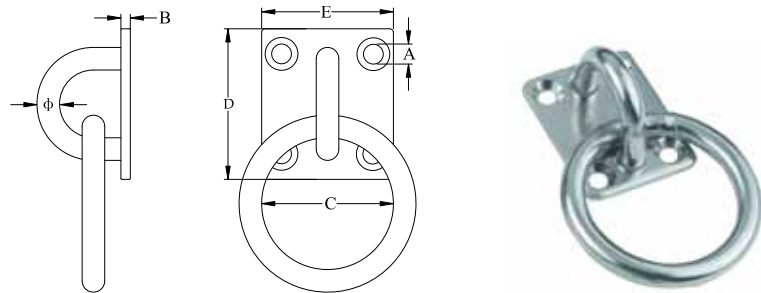


SQUARE PAD EYE, SS304 OR SS316



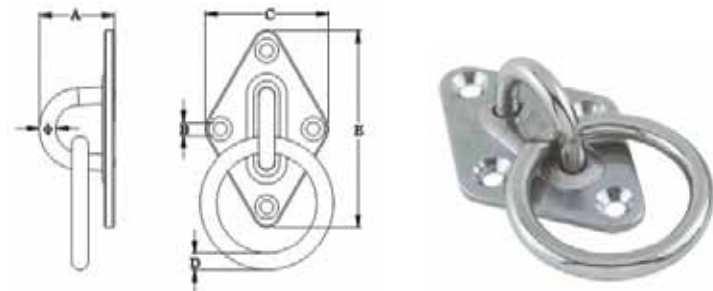
Part No. 304	Part No. 316	φ mm	A mm	B mm	C mm	D mm	SWL kgs	BL kgs
30044	<i>40281</i>	5.00	2.50	30.00	35.00	4.20	175	700
30045	<i>40282</i>	6.00	2.50	35.00	40.00	5.20	250	1000
30046	<i>40283</i>	8.00	2.90	40.00	50.00	5.50	400	1600
40280	<i>40284</i>	10.00	3.30	47.80	60.80	5.50	500	2000

SQUARE PAD EYE WITH RING, SS304 OR SS316



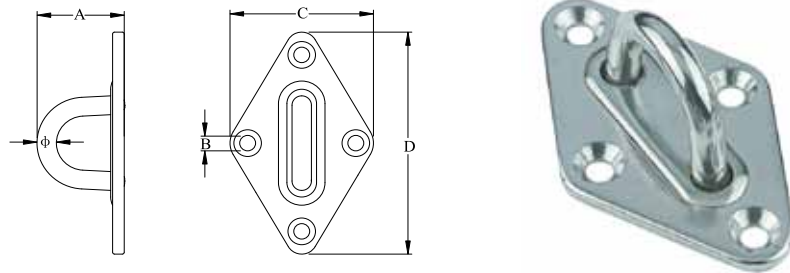
Part No. 304	Part No. 316	φ mm	A mm	B mm	C mm	D mm	E mm	SWL kgs	BL kgs
40268	<i>40271</i>	5.00	4.10	2.40	30.60	35.00	30.00	175	700
40269	<i>40272</i>	6.00	5.30	2.50	40.80	40.00	35.00	250	1000
40270	<i>40273</i>	8.00	5.60	3.50	45.50	50.00	40.00	400	1600

DIAMOND PAD EYE WITH RING, SS304 OR SS316



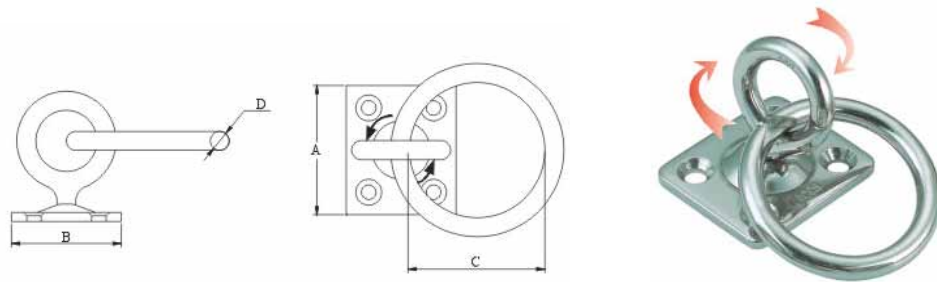
Part No. 304	Part No. 316	φ mm	A mm	B mm	C mm	D mm	E mm	SWL kgs	BL kgs
40274	<i>40277</i>	5.00	22.50	4.00	36.50	5.00	59.00	175	700
40275	<i>40278</i>	6.00	26.50	4.00	39.50	6.00	64.00	250	1000
40276	<i>40279</i>	8.00	33.00	5.00	50.00	8.00	80.00	400	1600

DIAMOND PAD EYE, SS304 OR SS316



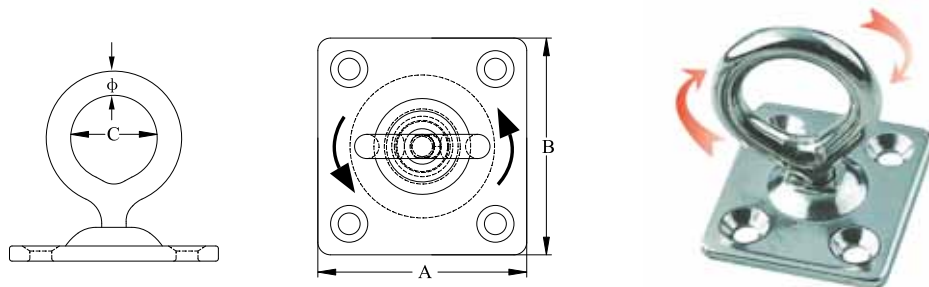
Part No. 304	Part No. 316	φ mm	A mm	B mm	C mm	D mm	SWL kgs	BL kgs
40291	40294	5.00	22.50	4.00	36.50	58.80	175	700
40292	40295	6.00	27.00	4.40	40.00	63.90	250	1000
40293	40296	8.00	33.00	5.50	48.80	79.90	400	1600

SQUARE PAD SWIVEL EYE (WITH RING), SS304 OR SS316



Part No. 304	Part No. 316	A mm	B mm	C mm	D mm	SWL kgs	BL kgs
40285	40288	34.00	30.00	30.80	5.00	112	450
40286	40289	40.00	34.00	40.00	6.00	175	700
40287	40290	50.00	40.00	50.50	8.00	212	850

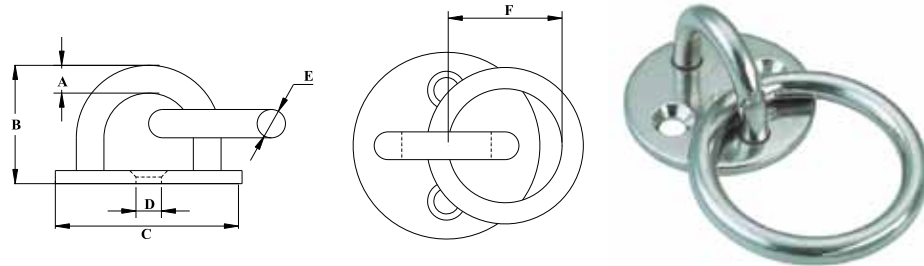
SQUARE PAD SWIVEL EYE, SS304 OR SS316



Part No. 304	Part No. 316	φ mm	A mm	B mm	C mm	SWL kgs	BL kgs
40297	40300	5.00	30.00	34.00	15.80	113	450
40298	40301	6.00	34.00	40.00	18.50	175	700
40299	40302	8.00	40.00	50.00	18.90	213	850

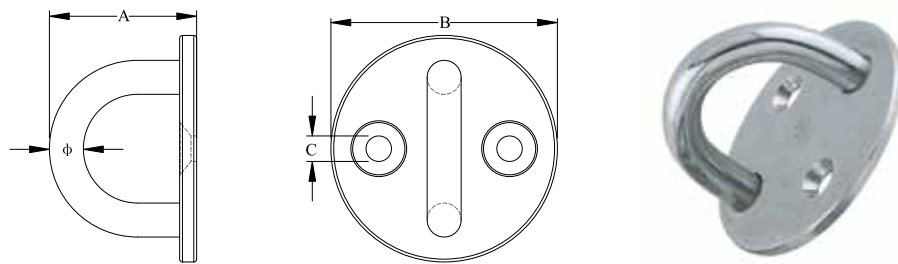


ROUND PAD EYE WITH RING, SS304 OR SS316



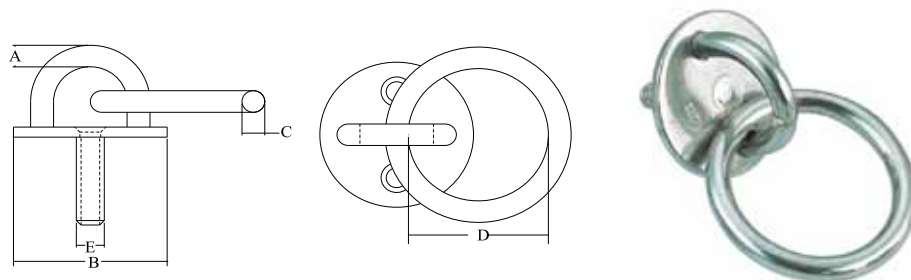
Part No. 304	Part No. 316	A mm	B mm	C mm	D mm	E mm	F mm
40303	40306	5.00	20.90	33.00	4.50	5.00	31.00
40304	40307	6.00	25.30	39.80	4.50	6.00	41.00
40305	40308	8.00	32.00	49.80	5.50	8.00	51.00

ROUND PAD EYE, SS304 OR SS316



Part No. 304	Part No. 316	φ mm	A mm	B mm	C mm	SWL kgs	BL kgs
40315	40318	5.00	20.90	33.00	4.20	175	700
40316	40319	6.00	26.00	40.00	4.50	250	1000
40317	40320	8.00	32.50	57.30	5.50	400	1600

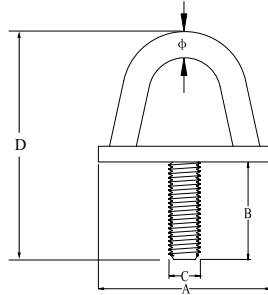
ROUND PAD EYE BOLT (WITH RING), SS304 OR SS316



Part No. 304	Part No. 316	A mm	B mm	C mm	D mm	E mm	SWL kgs	BL kgs
40309	40312	5.00	31.80	5.00	30.70	6.00	175	700
40310	40313	6.00	39.80	6.00	40.80	8.00	250	1000
40311	40314	8.00	50.00	8.00	50.80	10.00	400	1600

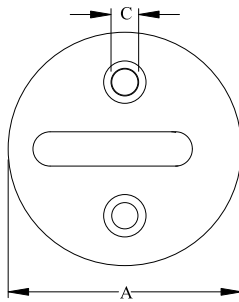
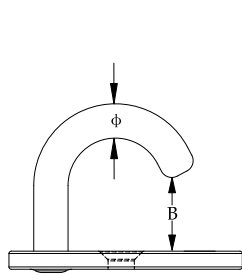
MARINE AND ARCHITECTURAL HARDWARE

ROUND PAD EYE BOLT, SS304 OR SS316



Part No. 304	Part No. 316	ϕ mm	A mm	B mm	C mm	D mm	SWL kgs	BL kgs
40327	<i>40330</i>	5.00	31.80	20.80	M5	42	100	400
40328	<i>40331</i>	6.00	39.80	23.00	M6	49	125	500
40329	<i>40332</i>	8.00	49.60	24.00	M8	56	250	1000

ROUND PAD EYE (OPEN), SS304 OR SS316



Part No. 304	Part No. 316	ϕ mm	A mm	B mm	C mm	SWL kgs	BL kgs
40321	<i>40324</i>	5.00	33.00	8.50	4.50	50	200
40322	<i>40325</i>	6.00	40.00	12.80	4.50	55	220
40323	<i>40326</i>	8.00	50.00	14.00	5.50	63	250