

BELLEVILLE WASHERS

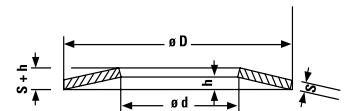
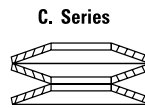
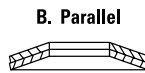
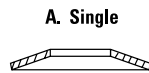
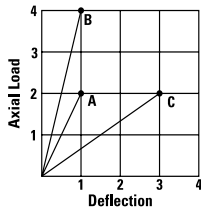
METRIC

GRADE

304/A2

SIZE

	Compressed to 0.75h		d	D	S	h	S+h	Part No.	PKT Qty
	Axial Load	0.75h mm							
M4	18kg	0.15	4.2	8.0	0.40	0.20	0.60	33544	200
M5	28kg	0.19	5.2	10.0	0.50	0.25	0.75	16687	100
M6	60kg	0.22	6.2	12.5	0.70	0.30	1.00	3540	100
M8	93kg	0.26	8.2	16.0	0.90	0.35	1.25	3541	100
M10	140kg	0.34	10.2	20.0	1.10	0.45	1.55	3542	100
M12	268kg	0.41	12.2	25.0	1.50	0.55	2.05	3543	100
M16	356kg	0.52	16.3	31.5	1.75	0.70	1.45	3544	100
M20	597kg	0.67	20.4	40.0	2.25	0.90	3.15	3545	100



CUP WASHERS

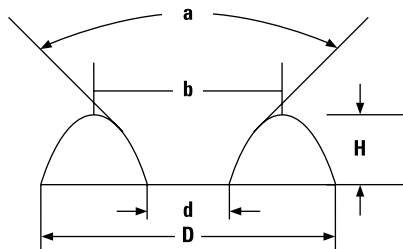
IMPERIAL

GRADE

304/A2

SIZE

	Part No.	PKT Qty
6G	1739	•
8G	1740	•
10G	1741	•
12G	1742	400
14G	5364	400



DIMENSIONS IN MM

SIZE	d	D	b	H	MAT. THICK.
NO.6 (3mm)	4.0	11.3	8.0	2.3	0.4
NO.8 (4mm)	4.8	13.7	10.0	2.5	0.4
NO.10 (5mm)	5.7	15.0	12.0	3.3	0.4
NO.12	6.1	17.6	12.5	3.8	0.4
NO.14 (6mm)	7.4	20.0	13.5	3.9	0.4

'a' = 90°

● PLEASE REFER TO BOOKLET AT BACK OF THE CATALOGUE FOR PACK QUANTITY.